



B-SAFETY
PROFESSIONAL SAFETY SOLUTIONS

Article No.:

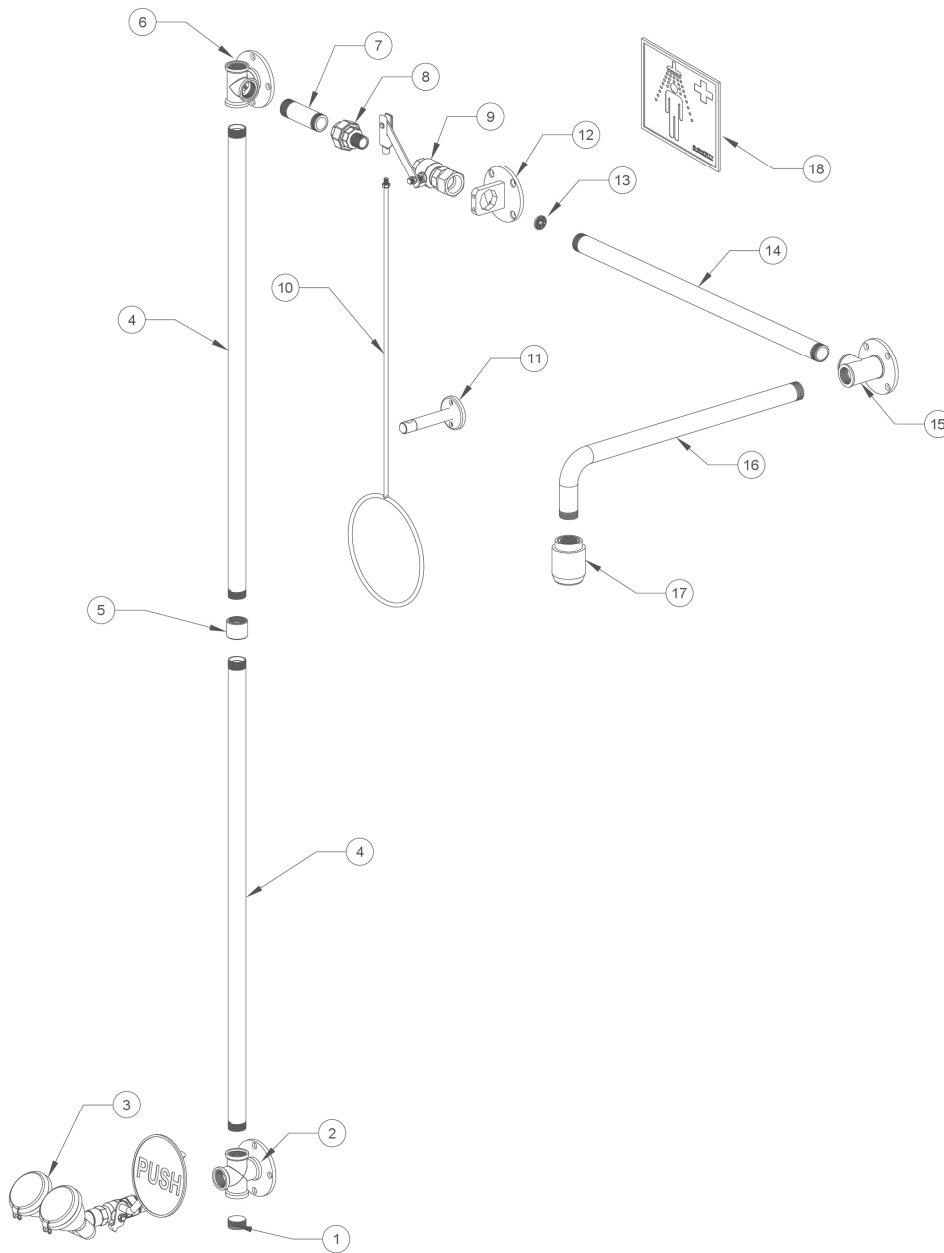
BR 871 085D

REV / DATE :

08/22

Description:

**ClassicLine safety shower combination with safety eye shower
BR210085, over door mounted, exposed pipework**



Part No.	Article No.	Quantity	Description	Material	Weight
1	C32-3/4	1	Plug 3/4"	Stainless steel AISI 316	0.03 kg
2, 6	F81801	2	Wall flange 3-fold, green	Stainless steel AISI 304	0.53 kg
3	BR 210 085	1	Safety eye shower with two spray heads, green	Various materials	1.10 kg
4	F81231	2	Straight pipe, green	Stainless steel AISI 304	1.21 kg
5	C28-001	1	Connection sleeve, green	Stainless steel AISI 304	0.06 kg
7	F81301	1	Connection pipe, green	Stainless steel AISI 304	0.12 kg
8	DNT3434IAES	1	Screwing 3/4", stainless steel	Stainless steel AISI 316	0.22 kg
9	F8271	1	Ball valve with lever for over-door mounting, green	Dezincification-resistant brass CW724R, stainless steel AISI 201	0.38 kg
10	F801-085	1	Pull rod, green	Stainless steel AISI 201	0.41 kg
11	F81901-80	1	Pull rod holder, green	Stainless steel AISI 201, AISI 304	0.16 kg
12	F80201	1	Valve holder on wall flange, green	Stainless steel AISI 304	0.35 kg
13	97BXX	1	Flow regulator 97B50 = 50 l/min (red) or 97B75 = 75 l/min (brown)	POM Hostaform C9021	0.01 kg
14	F81201	1	Straight pipe, green	Stainless steel AISI 304	0.84 kg
15	F81701	1	Wall flange 2-fold, green	Stainless steel AISI 304	0.47 kg
16	F81101	1	Bent pipe, green	Stainless steel AISI 304	0.94 kg
17	BR 010 365	1	High-performance shower head, black	POM Hostaform C13021	0.10 kg
18	BR 205 105	1	Emergency sign, 150 x 150 mm	PVC film, self-adhesive	0.01 kg