



B-SAFETY
PROFESSIONAL SAFETY SOLUTIONS

Article No.:

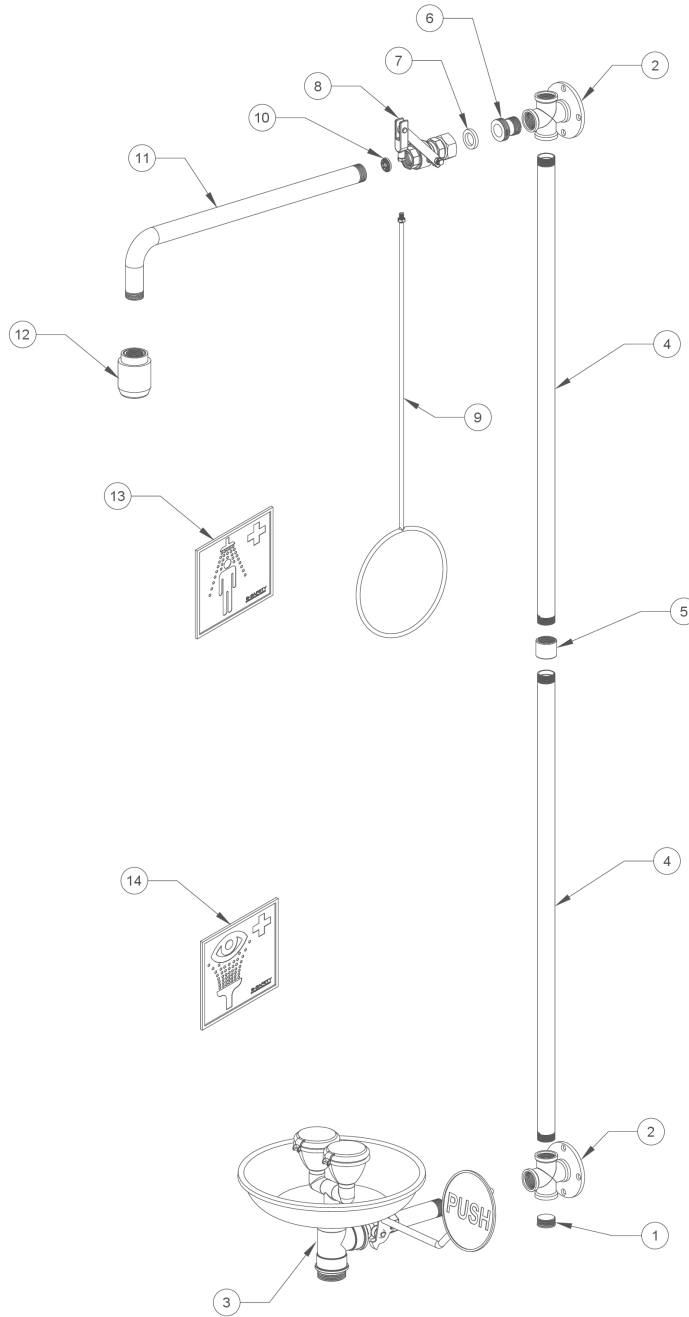
BR 867 095D

REV / DATE :

08/22

Description:

PremiumLine safety shower combination with eye shower with stainless steel bowl BR300195, wall mounted, exposed pipework



Part No.	Article No.	Quantity	Description	Material	Weight
1	C32-3/4	1	Plug 3/4"	Stainless steel AISI 316	0.03 kg
2	F81803	2	Wall flange 3-fold, stainless steel	Stainless steel AISI 316	0.53 kg
3	BR 300 195	1	Safety eye shower with stainless steel bowl, stainless steel	Stainless steel AISI 304, AISI 316	3.20 kg
4	F81233	2	Straight pipe, stainless steel	Stainless steel AISI 316	1.21 kg
5	C28-003	1	Connection sleeve, stainless steel	Stainless steel AISI 316	0.06 kg
6	XN1	1	Adapter XN1	Stainless steel AISI 316	0.06 kg
7	150040100	1	Gasket	Vulcan fiber	0.01 kg
8	F8276	1	Ball valve with lever and quick mounting system	Stainless steel AISI 316	0.38 kg
9	F801-095	1	Pull rod, stainless steel	Stainless steel AISI 316	0.41 kg
10	97BXX	1	Flow regulator 97B50 = 50 l/min (red) or 97B75 = 75 l/min (brown)	POM Hostaform C9021	0.01 kg
11	F81103	1	Bent pipe, stainless steel	Stainless steel AISI 316	0.94 kg
12	BR 010 395	1	High-performance shower head, stainless steel	Stainless steel AISI 316	0.62 kg
13	BR 205 105	1	Emergency sign, 100 x 100 mm	PVC film, self-adhesive	0.01 kg
14	BR 205 010	1	Emergency sign, 150 x 150 mm	PVC film, self-adhesive	0.01 kg