



B-SAFETY
PROFESSIONAL SAFETY SOLUTIONS

Article No.:

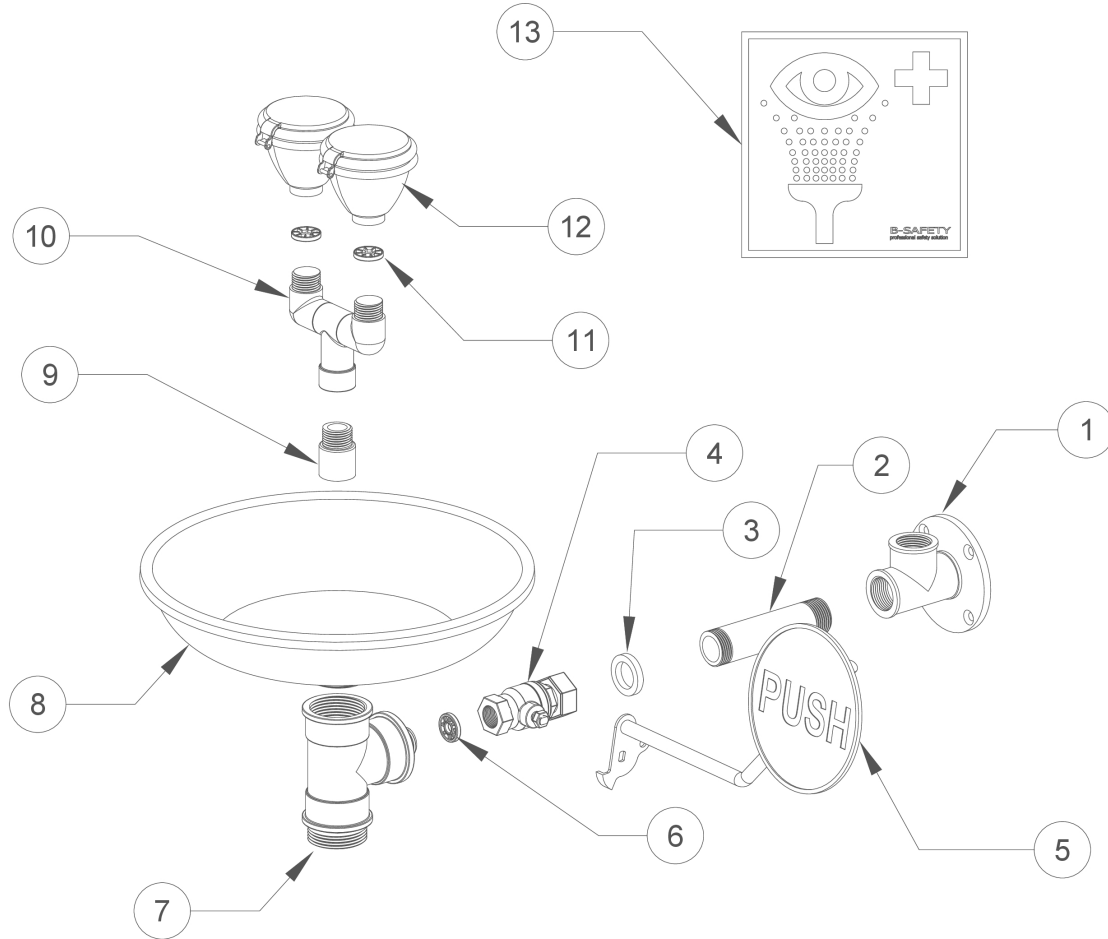
BR 300 085D

REV / DATE :

05/22

Description:

ClassicLine safety eye shower with stainless steel bowl, wall mounted, exposed pipework



Part No.	Article No.	Quantity	Description	Material	Weight
1	F81701	1	Wall flange 2-fold, green	Stainless steel AISI 304	0.47 kg
2	F81301-120	1	Connection pipe 3/4", green	Stainless steel AISI 304	0.12 kg
3	150410100	1	Gasket 3/4", narrow	Vulcanised fibre	0.01 kg
4	F8261	1	Ball valve with quick mounting system, 1/2"	Stainless steel AISI 304, AISI 316	0.20 kg
5a	G1-B	1	Lever for eye shower, long, green	Galvanised steel	0.30 kg
5b	F2120	1	Sign "PUSH" for safety eye showers	PVC film, self-adhesive, luminescent	0.01 kg
6	97B14	1	Flow regulator 14 l/min (pink)	POM, EPDM	0.01 kg
7	F300-15	1	Connection piece for eye showers with bowl, green	Stainless steel AISI 304	0.65 kg
8	F300	1	Bowl for safety eye showers, green	Stainless steel AISI 304	0.60 kg
9	RN1212-MS-10	1	Tap extension	Brass CuZn37	0.10 kg
10	F019	1	U-connector for eye showers, green	POM Hostaform C13021	0.04 kg
11	96B001	2	Strainer gasket	Stainless steel AISI 304, TPE	0.01 kg
12	BR 710 600	2	High-performance spray head	POM Hostaform C13021	0.10 kg
13	BR 205 010	1	Emergency sign, 100 x 100 mm	PVC film, self-adhesive	0.01 kg