



**B-SA**  
PROFESSIONAL

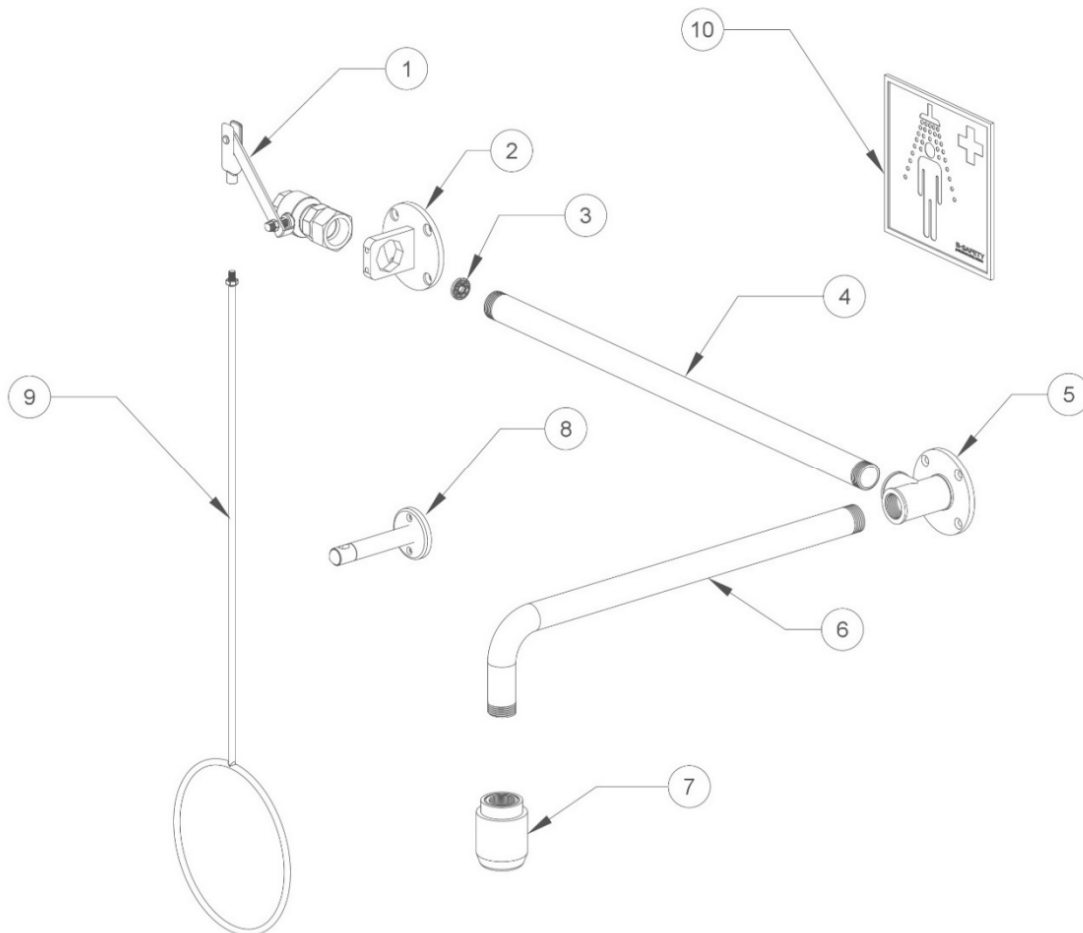
Article No.:

**BR 084 085/VD**

REV /  
DATE :  
**08/2**

Description:

**ClassicLine variable body safety shower, above door installation,  
exposed pipework**



Part No.	Article No.	Quantity	Description	Material	Weight
1	F8271	1	Ball valve with lever for over-door mounting, green	Dezincification-resistant brass CW724R, stainless steel AISI 201	0.38 kg
2	F80201	1	Valve holder on wall flange, green	Stainless steel AISI 304	0.35 kg
3	97BXX	1	Flow regulator 97B50 = 50 l/min (red) or 97B75 = 75 l/min	POM Hostaform C9021	0.01 kg
4	F81003/sond	1	Straight pipe, special length, green	Stainless steel AISI 304	depending
5	F81701	1	Wall flange 2-fold, green	Stainless steel AISI 304	0.47 kg
6	F81101	1	Bent pipe, green	Stainless steel AISI 304	0.94 kg
7	BR 010 365	1	High-performance shower head, black	POM Hostaform C13021	0.10 kg
8	F81901-80	1	Pull rod holder, green	Stainless steel AISI 201, AISI 304	0.16 kg
9	F801-085	1	Pull rod, green	Stainless steel AISI 201	0.41 kg
10	BR 205 105	1	Emergency sign, 150 x 150 mm	PVC film, self-adhesive	0.01 kg